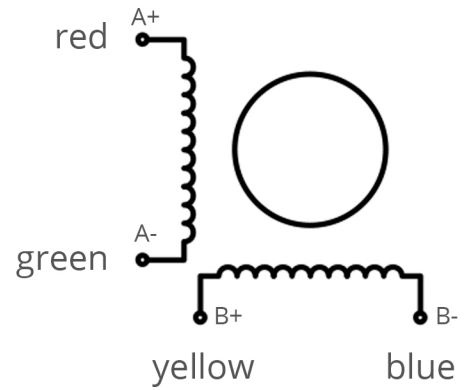


SPECIFICATIONS

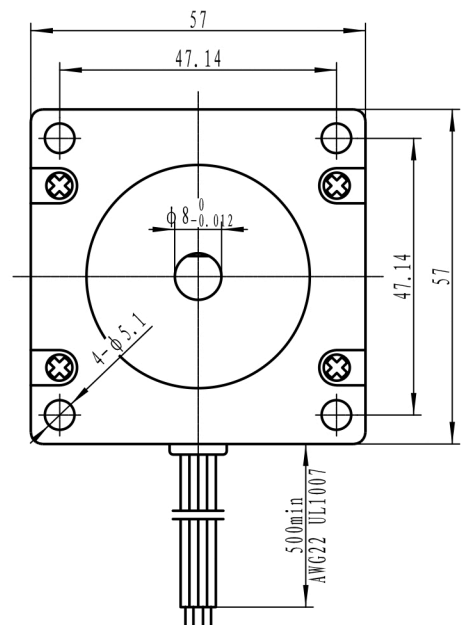
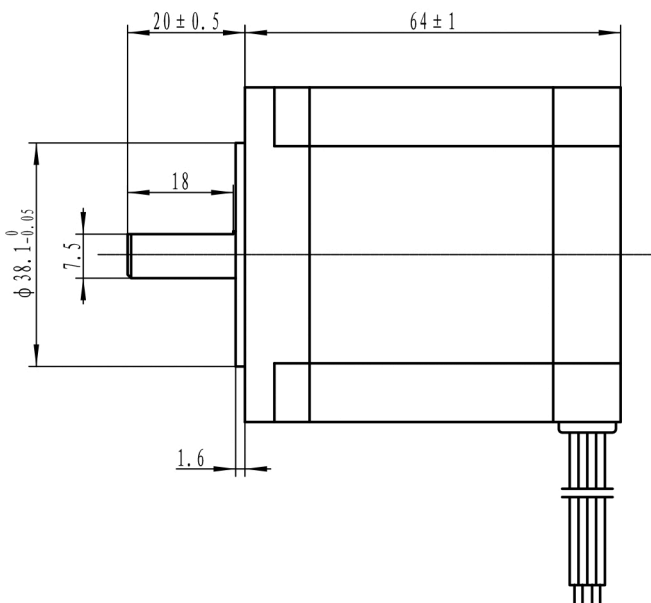
Standard	NEMA 23
Step angle	1.8° ±5%
Current / Phase	3.0A
Voltage / Phase	3.9V
Phase No.	2
Resistance	1.3 ±10% Ω
Insulation resistance	100MΩ (500V DC)
Inductance	2.2 ±20% mH
Insulation class	B
Holding torque	15kgf.cm

DIAGRAM



DIMENSIONS

UNIT: mm





- **NEMA 23 15 kgf.cm 3A**
- **WS23-0150-30-4**

